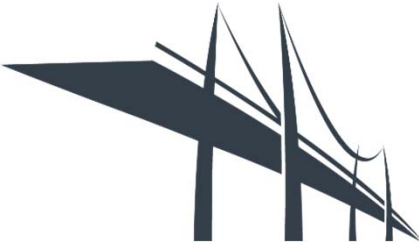


# Highway Special Construction Systems



**HiSCS**  
engineering experts



**General Trading  
&  
Contracting Company**





# HiSCS in Brief

Supply and application of specialized products for Bridge, Highway & Building industry, including the design, construction, installation and supervision of these applications.

**LMK** manufacturer & supplier  
Post Tensioning System

Specialized Engineering services such as design, inspection, NDT, evaluation, maintenance & retrofitting of structural elements requiring sophisticated know-how.



# HiSCS Headquarters & Agencies

## GREECE

16, Kifissias Ave., P.C. 11526 Athens,  
T. +30-216-0702358,  
E: info@hiscs.gr, www.hiscs.gr

## CYPRUS



23, 1<sup>st</sup> Apriliou Str, 5281 Paralimni  
7, Chiou Str., 8027 Pafos  
T & F: +357-23744406, 26819745  
E: quakeguard@cytanet.com.cy

## KUWAIT



A.N.A  
TRADING & CONT. EST.  
Sharq, Khalid Ebn Al-Waleed St., Al  
Sawaber 6 Complex, Floor 4, Office 1,  
T & F: +965-24578895,  
E: info@anakw.com

## KSA



MSHARI AL SHATHRI  
CONTRACTING COMPANY  
P.O.Box 2666, Riyadh 11461  
T & F: +966-920008999

## UAE



ESPT PRE-STRESSED  
CONCRETE CONTRACTING L.L.C  
Business Bay- The binary Tower - Office  
1012, Dubai  
T & F: +971(4)319016



**HERCULES**

No. 12A Jalan SB Jaya 1, Taman  
Industri SB Jaya, 47000 Sungai Buloh, Selangor Darul Ehsan, Malaysia.

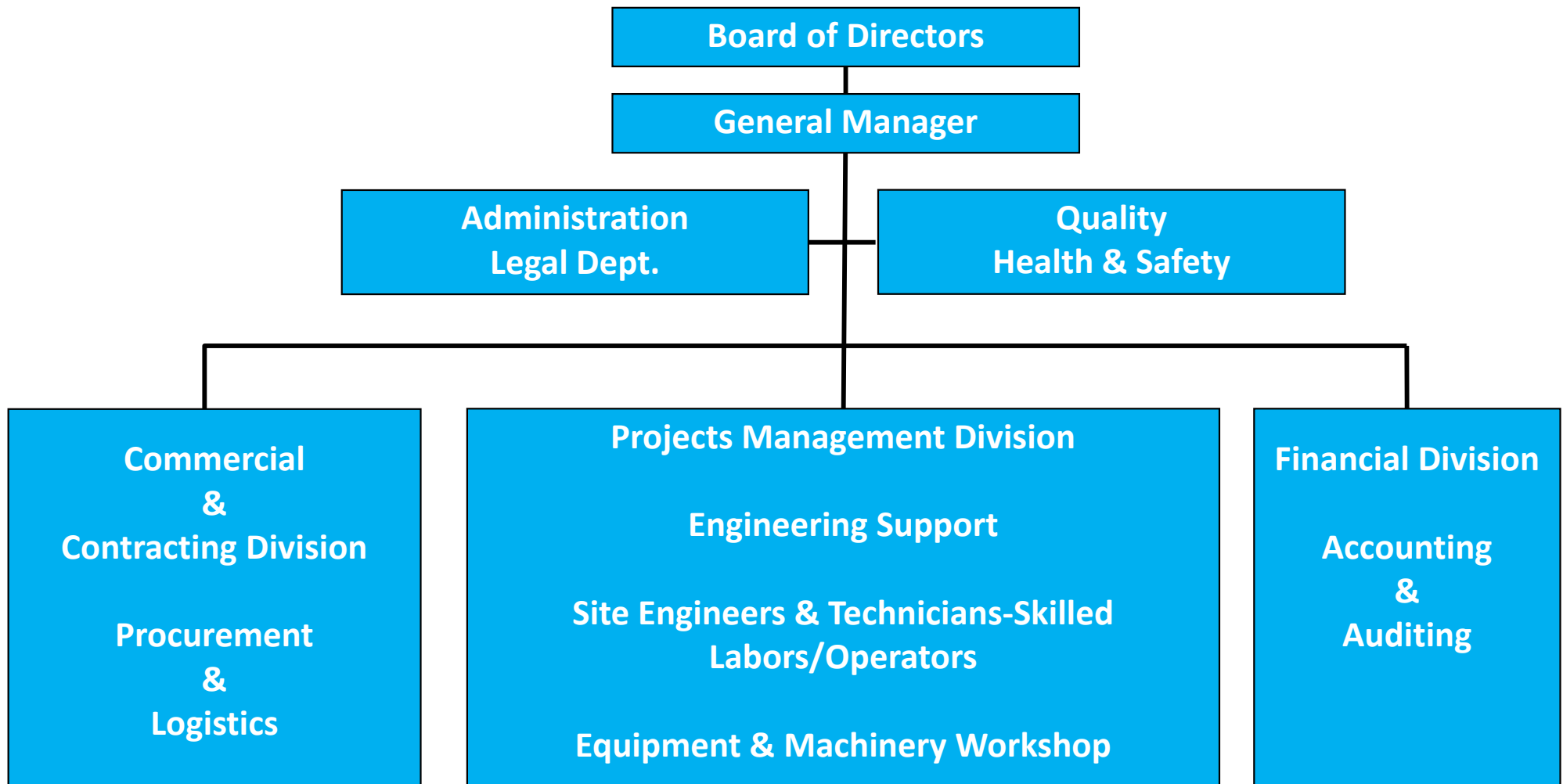
T.+60 3 6156 6388  
F.+60 3 6156 4399

E:LMKPT@hercules-engineering.com

## MALAYSIA

# HiSCS Organization - Manpower

Long experienced staff of Engineers & Technicians





# Mission – Values – Principles

- ◆ Thinking & Acting with the **Customer** in Mind
- ◆ Aiming to Fulfill **Customer Needs** and Exceed Expectations
- ◆ Creating and Keeping of Long-term **Business Relationships**
- ◆ Application of **Advanced Technologies & Engineering Support** respecting **Safety, Quality & Environmental issues**
- ◆ Commitment to **Successful Completion** of Demanding Trading & Construction Projects

## Clientele:

Contractors, Public & Private Sector Institutions, Motorway Operators



# Activities

- ◆ **SUPPLY & INSTALLATION** of specialized technology materials for infrastructure, such as post tensioning materials, bearings and expansion joints
- ◆ **LMK** Post Tensioning System Designed-Owned-Controlled & Managed by HiSCS
- ◆ **INSPECTION , NDT & EVALUATION** of structures and elements
- ◆ **MAINTENANCE & REPAIR** of structural elements (specialized applications for retrofitting, supervision, repairing)
- ◆ **ENGINEERING, DESIGN** and projects support, co-operation with Institutions, Authorities and Int'l suppliers





# Supply – Installation – Supervision – Training

◆ Post – Tensioning Materials / **LMK**  
Post Tensioning System

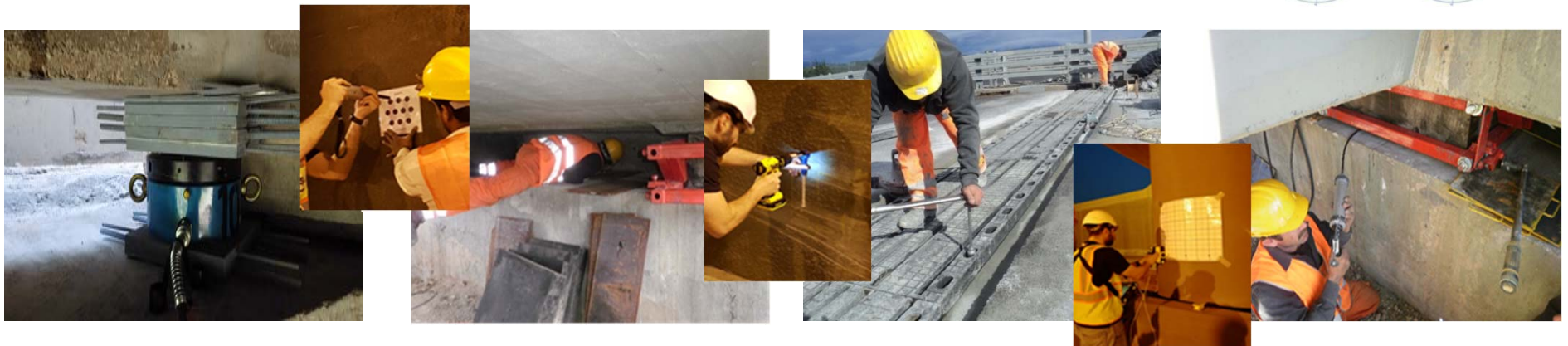
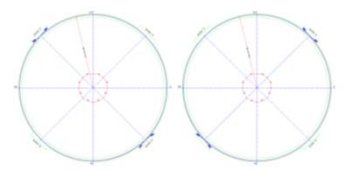
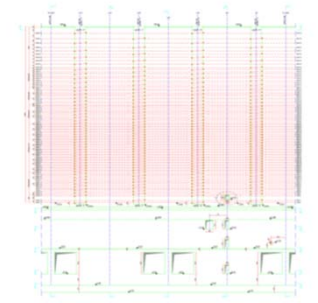
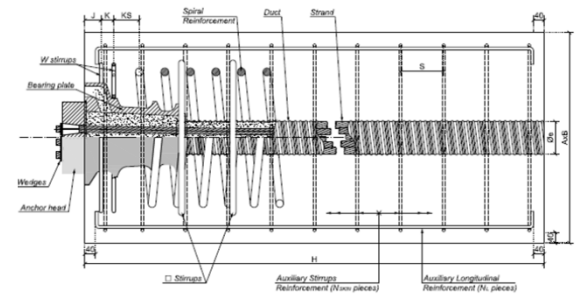
◆ Other Specialized Structural Products  
Civil & Mechanical Engineering

PT-Bearings-Joints-Road Traffic & Safety



# Maintenance – Repair – Replacement – Engineering & Consulting Services

- ◆ Jacking and Lifting of Bridges & Structures – Replacement, Repair and Maintenance of Bridge Bearings
- ◆ Replacement, Repair and Maintenance of Bridge & Highways Structural Elements (Expansion Joints, Road & Traffic Safety)
- ◆ Engineering Support, Inspection & NDT, Issuance of Technical Evaluation Reports, Calculation Reports and Designs





# Equipment & Machinery

Full range of equipment & machinery-tools:

- ◆ **Post-tensioning** – Stressing jacks, pumps, threading and grouting machines, de-coilers, grout tests apparatus, machinery for forming steel strip corrugated tendons
- ◆ **Products installation** – Complete range of tools, presetting devices, mixers for mortars and resins, lifting & hoisting devices, specialized machinery
- ◆ **Maintenance & Repair** – Lifting jacks, pumps, distribution valves, high pressure hoses, temporary bearings, distribution plates, special deforming frames, sliding devices

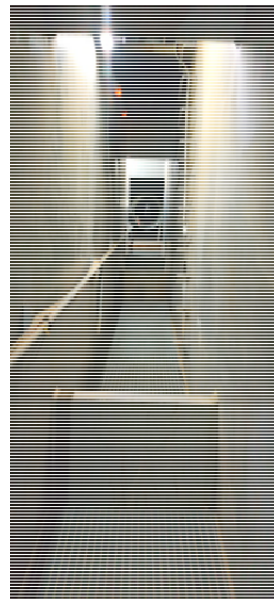
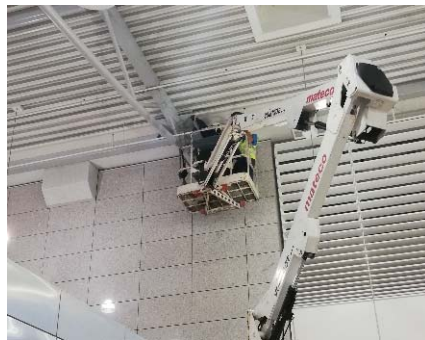


# Air – Ground – UnderGround/Water Activities

Use of Drone for non accessible aerial inspections



Underwater inspection



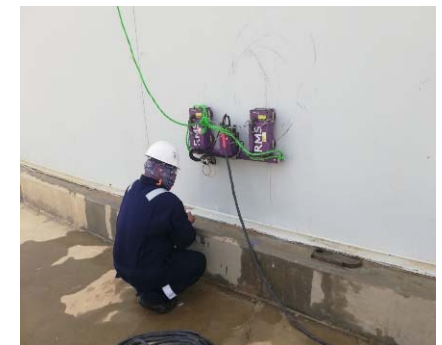
Confined Areas



NDT performance



Above & Below Ground





# Specialized Engineering & Construction



**H**ighway  
**S**pecial  
**C**onstruction  
**S**ystems

E: [info@hiscs.gr](mailto:info@hiscs.gr)  
[www.hiscs.gr](http://www.hiscs.gr)